

Baumit Renders for Porotherm Masonry



Application Guidelines



- Light and easy application
- Tried and tested
- EWI system compatible

Ideas with a future.

Renders for Porotherm Masonry



Baumit lightweight render only system



Baumit offers a range of specially formulated render, plaster and thermal insulating systems suitable for application on Porotherm masonry. The systems are vapour permeable and complement the breathable nature of Porotherm masonry. The products are suitable for machine application to increase efficiency and maintain consistent material quality during application.

Lightweight Render System

The Baumit render systems for Porotherm comprise of a basecoat render and a durable, coloured topcoat render. In certain circumstances an intermediary reinforcement coat may also be required.

Baumit Basecoat Renders

The core component of the system is the lightweight render basecoat MP 69 / MP 69 Speed. The is render is specifically designed to suit Porotherm masonry in terms of strength compatibility and provide good weather resistance. The lightweight basecoat acts as a buffer zone between the masonry and topcoat render, absorbing stresses from the masonry and thereby reducing the risk of cracking to the topcoat.

Baumit Reinforcement Coat

A reinforcement layer of MC55W provides an extra level of protection to the render system when applied in locations exposed to severe or very severe weather conditions. It comprises of a 3 - 5 mm thick layer of contact mortar with an embedded layer of Baumit StarTex reinforcing mesh applied over the basecoat render.

The following products are suitable for internal and external use onto the Porotherm block substrate.

Porotherm Masonry	Baumit Basecoat Render
Porotherm T7, T8	Baumit MP 69 Speed
Porotherm S9, S11, T12	Baumit MP 69
Porotherm 100, 140, 190	Baumit MP 69



Application



Site Work

Preparing Porotherm Masonry

The rules for best practice must be observed when erecting Porotherm masonry. Breakages and loose materials, or open joints in the wall surface should be repaired and filled. Protect the masonry and building materials from water ingress during construction. The Porotherm masonry should be dry before rendering and remove any signs of efflorescence with a dry brush - do not use water. Remove any dust, dirt or other contaminants from the surface of the masonry.



General Basecoat Application

Baumit lightweight render systems are applied directly onto Porotherm masonry. Special surface pretreatments are not required. Where necessary, the walls may be mist sprayed with water to reduce high suction. Refer to our technical support team for guidance on dealing with changes in the rendering substrate, such as concrete elements, steel lintels or insulants etc.

- Spray or hand apply the render or plaster in two passes, wet on wet to reduce the suction from the masonry.
- Rule off the render or plaster to a straight edge to produce a flat uniform base coat free from undulations to the required thickness.
- On hardening, key the surface with a grid float or consolidate it with a rubbing up float.
- Leave to dry for 1 day per mm basecoat thickness before applying further coatings.



Renders for Porotherm Masonry



Recommended Products



Baunit MP 69 Speed

Universal, accelerated setting, lightweight lime-cement render with lightweight aggregate. Specially designed for use onto thermal insulating masonry as a basecoat and topcoat in internal and external areas.



Baunit MP 69

Universal, lightweight lime-cement render with lightweight aggregate. Specially designed for use onto thermal insulating masonry as a basecoat and topcoat in internal and external areas.



Baunit MultiContact MC 55 W

Mineral based, multi-purpose contact mortar for use as a reinforcement coat with Baunit StarTex reinforcing mesh over render basecoats, old facades and selected render carrier boards.



Baunit Klima RK 39

Pure lime basecoat and topcoat plaster for use in all internal areas. Special microporous design for rapid absorption and release of water vapour. Purely mineral and free from toxins.



Baunit Klima KP 36 W

Natural white, lime basecoat plaster for use in all internal areas. Special microporous design for rapid absorption and release of water vapour. Purely mineral and free from toxins.



Baunit Klima Glätt

Natural white lime skimming plaster for creating a fine smooth finish onto Klima basecoat plasters and other lime and lime-cement renders and concrete surfaces. For use on internal areas only.



Baunit SEP

Mineral based topcoat render for a decorative free-style textured finish. Weather resistant and water vapour permeable. For internal and external areas. Suitable for hand or machine application.



Baunit SilikonTop

Ready to use, mineral wet topcoat render for thin coat application. Provides a vapour permeable and stain resistant decorative finish with scratched or dragged grain texture. Suitable for hand or machine application.



Baunit PremiumPrimer

Acrylic based liquid primer for use on internal and external areas which helps to reduce and equalise the suction on newly prepared surfaces and to ensure good adhesion for Baunit topcoat renders.



Baunit NanoporTop

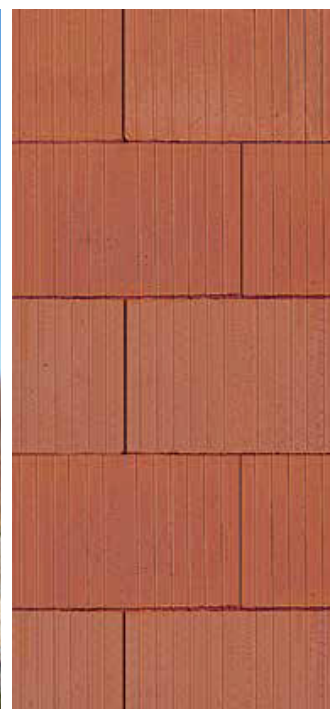
High performance thin-layer topcoat render with superior self-cleaning properties and breathability due to nano-technology. Available in a range of grain sizes from 1mm to 3mm.



Baunit GranoporTop

Ready mixed, synthetically bound, washable thin coat finish render, with excellent weathering capabilities. Suitable for use with any façade render system.

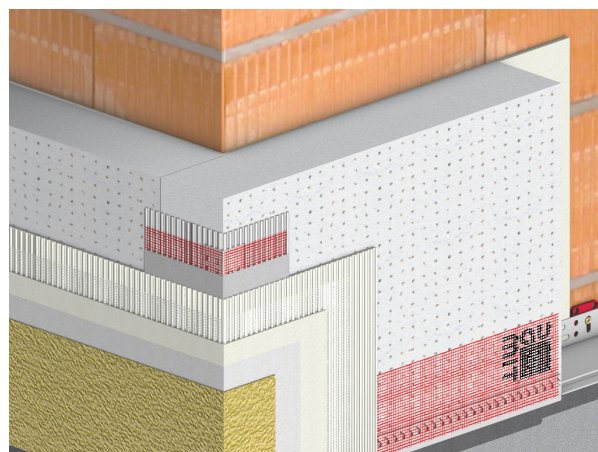
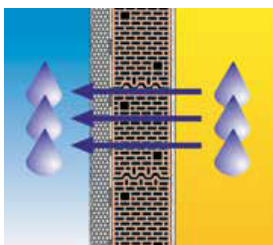
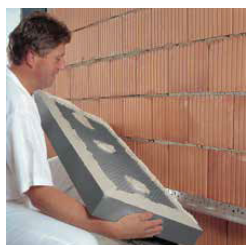
Full EWI System Solution for PoroTherm Masonry



Baumit External Wall Insulation: OpenSystem

Baumit OpenSystem is a unique EWI system which creates breathable walls. All components are vapour permeable allowing the walls to breath, creating an optimal living climate throughout summer and winter.

The OpenTherm EPS boards contain numerous holes of around 2-3 mm, which ensure high vapour permeability and enable water vapour to be released to the outside.

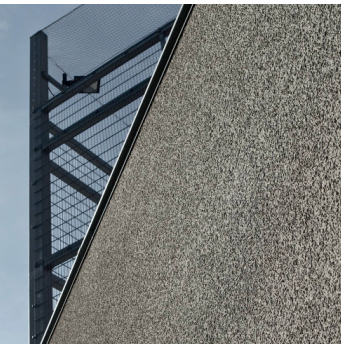


The Baumit OpenSystem has some notable features that will help a building to not only perform well, but also to look good for many years to come. Combining the best fixing technology, vapour permeability, high performance insulation and an innovative topcoat with nanotechnology, Baumit OpenSystem helps to create a building that will last for decades.





Beautiful and individual façades
to last a lifetime



Baumit Topcoat Renders

The render system is completed with a decorative topcoat render to provide the essential water resistance to the outer surface of the render system. The Baumit renders are available in a range of aggregate sizes and over 888 colours from the Baumit Life colour range. Baumit ready mixed topcoat renders do not require painting.

Select from our range of topcoats, each with its own unique properties:

- **Baumit NanoporTop** - Self-cleaning, durable render
- **Baumit SilkonTop** - Flexible and elastic hardwearing render
- **Baumit GranoporTop** - Solid quality, all-round render

Application

A coat of Baumit PremiumPrimer is applied to the surface of the basecoat render with a brush or roller and left to dry for 24 hours. The topcoat render is then applied with a stainless steel plastering trowel or suitable spraying equipment and smoothed out flat to the thickness of the aggregate. After a short while the surface can be textured in tight circular motions using a smooth plastic floating trowel.

The topcoat render should be applied systematically to complete sections without breaks. A wet edge must be maintained to avoid inconsistencies in the finished texture.



Baumit Internal Lime Plaster System



Baumit Klima Plaster System

- Moisture-regulating
- Mineral-based and non-toxic
- Breathable

Moisture regulating, mineral based and free from pollutants. Products in the Baumit Klima range regulate the interior climate on their own. The lime-based products are the perfect product choice for anyone with a preference for natural building materials.

The system basecoat plaster and finishes have a micro-pore structure which provides outstanding climate-regulating properties. Excess moisture from the air is absorbed into the micro-pores and held, to maintain a dry plaster surface. As the internal conditions become drier the moisture is slowly released back into the room to rebalance the humidity levels.



All at a click

baumit.co.uk



Baumit Ltd

Unit 2 Westmead, New Hythe Lane
Aylesford, Maidstone
Kent ME20 6XJ

t: +44 (0) 1622 710 763
e: contact@baumit.co.uk
w: baumit.co.uk

Ideas with a future.