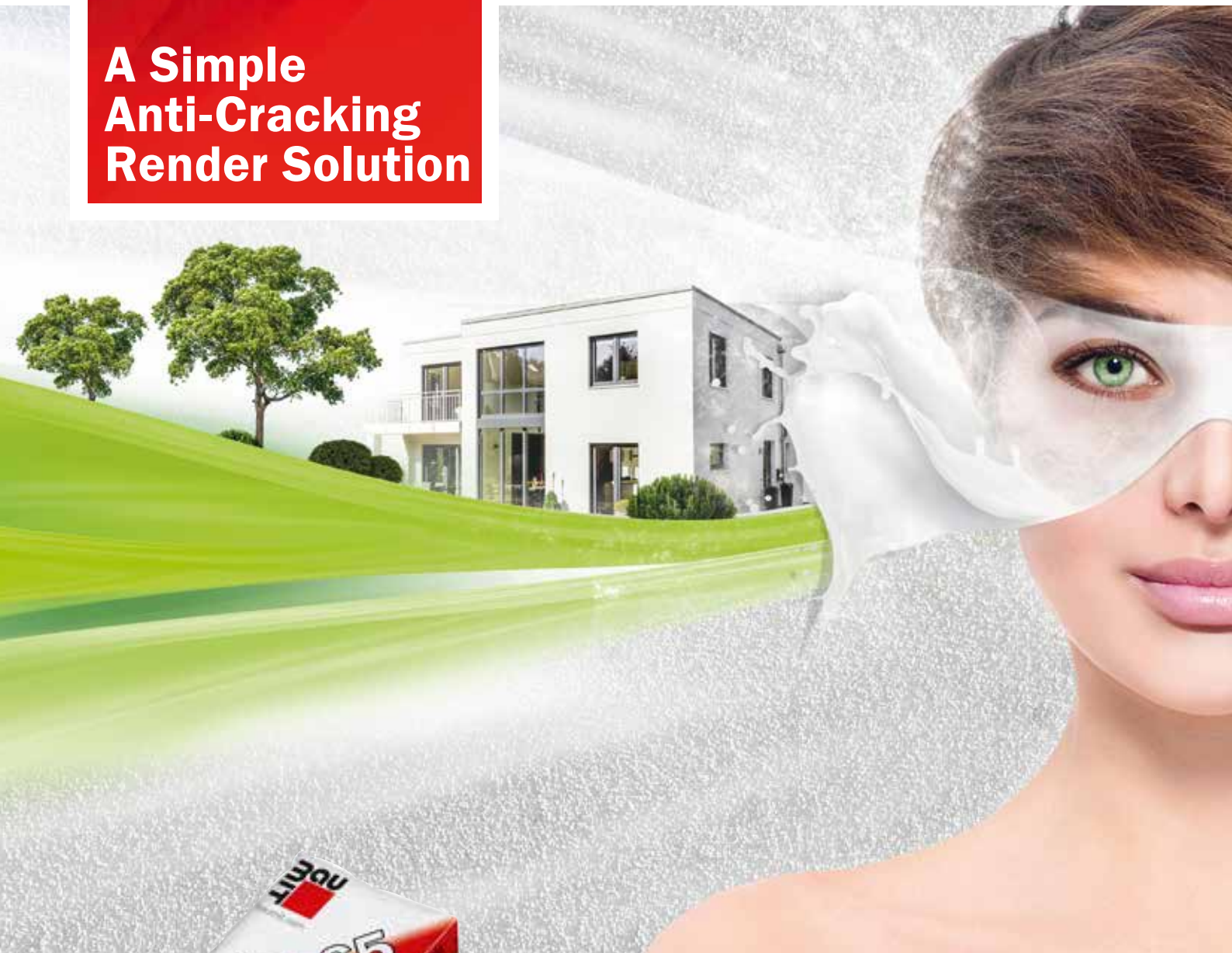


# Baumit Unirend System



**A Simple  
Anti-Cracking  
Render Solution**



**Ideas with a future.**

**Baumit  
KZP-65**



**Beautiful and individual façades  
to last a lifetime**



## **Flexible finish**

Adding lime to a sand and cement based mortar gives it far more flexibility which means it allows movement without cracks appearing. A massive advantage for old and new buildings alike.

The versatile Baumit lime cement render KZP 65 is a pure-mineral, smooth render. This render can be used on the interior and exterior as well as in wet rooms to create a solid base for final finishes. As a base coat lime render is suitable for receiving thin coat finish renders.

## **Enjoy a longer lasting finish**

Popular methods of rendering such as monocouche can be prone to cracking. Baumit has a cost effective solution that eliminates this. With KZP-65, primer and topcoat applied you have a long lasting solution to problems commonly associated with through coloured renders.







## Benefits of the Unirend System

- Market leading range of colours
- High levels of flexibility
- Lime-cement render adds more flexibility to prevent cracking
- Good levels of breathability compared to traditional sand and cement renders\*
- No pre-treatment of substrate needed
- Can be machine or hand applied
- Suitable Baunit topcoats are resistant to algae and mould
- Weather and frost resistant
- Compact construction with no lightweight aggregates means better consumption with no loss of strength
- Impact resistant
- Grain size 0 - 1.2 mm
- Consumption of approximately 1.4 kg / m<sup>2</sup> / mm
- Minimum application thickness internally as a basecoat - 10mm
- Minimum application thickness externally as a basecoat - 15mm

\*when used with SilikonTop or NanoporTop as a top coat.

### UNIrend SYSTEM



- Resistant to algae and mould
- Water-repellent
- Good elasticity

KZP 65	RENDER
UniPrimer	PRIMER
GranoporTop, SilikonTop, NanoporTop	TOPCOAT

**Baumit  
Topcoats**



**Unlimited possibilities for façade design**



## Strong renders, beautiful façades

Baumit topcoats are proven to last for decades. They protect the facade from weather, as well as from mechanical and thermal stresses. As the visible external layer of a building, Baumit topcoats enable homes to retain their original aesthetic for many years.

Baumit Life offers an extensive range of 888 render and paint colours for your facade. This opens up a new dimension in designing buildings, providing complete freedom with it comes to facade design.



### Baumit NanoporTop

Thanks to nanotechnology, this topcoat render has a high self-cleaning ability and is vapour permeable. The microscopically smooth surface makes it hard for dirt particles to hold on and the quick drying surface reduces the chance of micro-organisms finding the right living conditions. Suitable for every EWI system and every basecoat.

### Nanotechnology for your façade



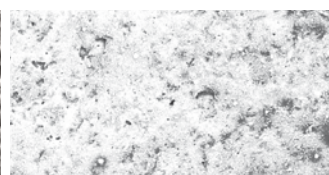
#### Normal Render



approx. 0.2 mm

At this size, you can see that the surface of normal render is much rougher. This makes it easier for dirt particles to take hold.

#### Baumit NanoporTop Render



approx. 0.2 mm

The microscopically smooth surface of Baumit NanoporTop Topcoat makes it hard for dirt particles to take hold.

## Always the right choice

Baumit offers the perfect render solution to every project style and requirement. If you are going for a high-end solution, Baumit NanoporTop, with its unique self-cleaning effect, is always the best choice. If it is extremely long lasting, high durability with dirt-resistance you are looking for, you can achieve this with SilikonTop. For the more straight forward projects, Baumit GranoporTop gives you solid quality with a great price-performance ratio. For more design focused projects where colour choice is important, Baumit PuraTop is the perfect choice.



### Baumit SilikonTop

Weather resistant, breathable thin coat render made from a silicone resin base. Topcoats suitable for every type of basecoat.



### Baumit GranoporTop

Synthetically bound, washable thin coat finish render with excellent weathering capabilities. Suitable for every façade render system.



### Baumit PuraTop

Intense and brilliant color shades. Break the limits of facade color tones and choose your favorite shade from the entire Baumit Life Color System.



## More than just walls

Baumit offers a complete range of mineral and synthetic topcoats, each one designed to suit different builds, however one thing they all have in common is that they help to protect and improve the face of each building.

### Aesthetics and Individuality

You can choose from 888 colours of the Baumit Life Colour programme, and of different grain sizes for multiple textures, to create the desired finish for your building.

### Protection

Protecting your building is just as important as how it looks. Baumit has a wide selection of tried and tested renders with properties that are capable of handling moisture well, vapour permeable, self-cleaning mineral based, synthetic or natural. All will protect your building, so take your pick to best suit your requirements.

## Durability

The high quality of Baumit binders and colour pigments in each product ensures that your building will look good over time and keep maintenance to a minimum. Baumit Nanopor can extend this life still further.

### The perfect finish

Baumit StyleTop renders and façade paints offer particularly intensive, vibrant colour tones to make your façade really stand out.





## Brilliant effect: Baumit PuraColor

There has been a growing trend towards very intense colours. However, combining architectural aesthetics with the high demands of energy efficiency and durability has presented building owners, designers and contractors with particular challenges up to now.

### Paints and renders: dark and intense shades

Building owners and designers who wanted a strong colour scheme for the façade have been very restricted in the choice of colours up to now – mainly because dark shades faded out and heat up a lot in the sun. But, the unique formulation of Baumit PuraColour now brings the change! It defines a whole new generation of façade design, allowing virtually infinite possibilities in any colour you want.

These 94 intense colour tones form the basis for the Baumit Life colour system by systematically brightening those shades up.

The intense range from Baumit stands out due to their strong colours and give any façade an exceptional and very individual character. Incorporating innovative “cool pigments”, they can also be applied over large areas on an external wall insulation system.

0021	0031	0041	0051	0061	0071	0081	0121	0131	0141	0151	0161	0171	0181
0191	0201	0211	0221	0231	0241	0281	0291	0301	0311	0321	0331	0341	0351
0361	0371	0381	0391	0401	0411	0421	0431	0441	0451	0461	0471	0481	0491
0501	0511	0521	0561	0571	0581	0591	0601	0611	0621	0631	0671	0681	0691
0701	0711	0721	0731	0741	0751	0761	0771	0781	0791	0831	0841	0851	0861
0871	0881	0891	0901	0911	0921	0931	0971	0981	0991	1001	1011	1021	1031
1041	1051	1061	1071	1111	1121	1131	1141	1151	1161				

The samples shown are intended as a colour guide for the product selected. It cannot be guaranteed that the colours of the materials supplied will be absolutely identical.



## Cool colours for intense facades

- Enables dark colours on EWI
- Reduced surface temperature
- Safety combined with top quality

Cool pigments reflect a large proportion of the sunlight to which they are exposed, reducing surface temperature and making it possible to apply trendy dark colours over an entire externally insulated surface.

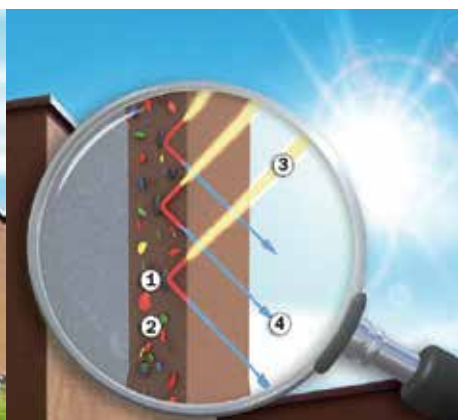
The new pigment is mixed into paints and plasters during factory production, which means that all 888 Life colours with a lightness coefficient lower than 20 can be applied over a large surface on an external thermal insulation composite system or monolithic masonry.

### The cooling technology:

Where standard pigments absorb a large proportion of sunlight, cool pigments reflect the sun's rays, reducing the surface temperature. That's how Baupigment plasters and paints stay really cool.

### TSR vs. BRV (HBW)

The Brightness Reference Value (BRV/HBW) expresses the brightness of a colour to the human eye compared to pure white (= HBW 100) or to deep black (=HBW 0). Whereas, the BRV considers only the visible wavelength range, the thermal heating of a façade depends on the whole solar radiation, including ultra-violet and infrared radiation. That's what is measured by the TSR value (=Total Solar Reflectance). The higher the TSR value, the more solar radiation is reflected and the lower is the thermal heating of the surfaces.



### Surface with CoolPigments

- ① CoolPigment
- ② Standard pigments
- ③ Sunlight (light spectrum)
- ④ Reflected sunlight



**All at  
a click.**

**baumit.co.uk**



**Baumit Ltd**

t: +44 (0)1622 710 763  
e: [contact@baumit.co.uk](mailto:contact@baumit.co.uk)  
w: [baumit.co.uk](http://baumit.co.uk)

Unit 2 Westmead, New Hythe Lane,  
Aylesford, Maidstone, Kent, ME20 6XJ

**Ideas with a future.**

